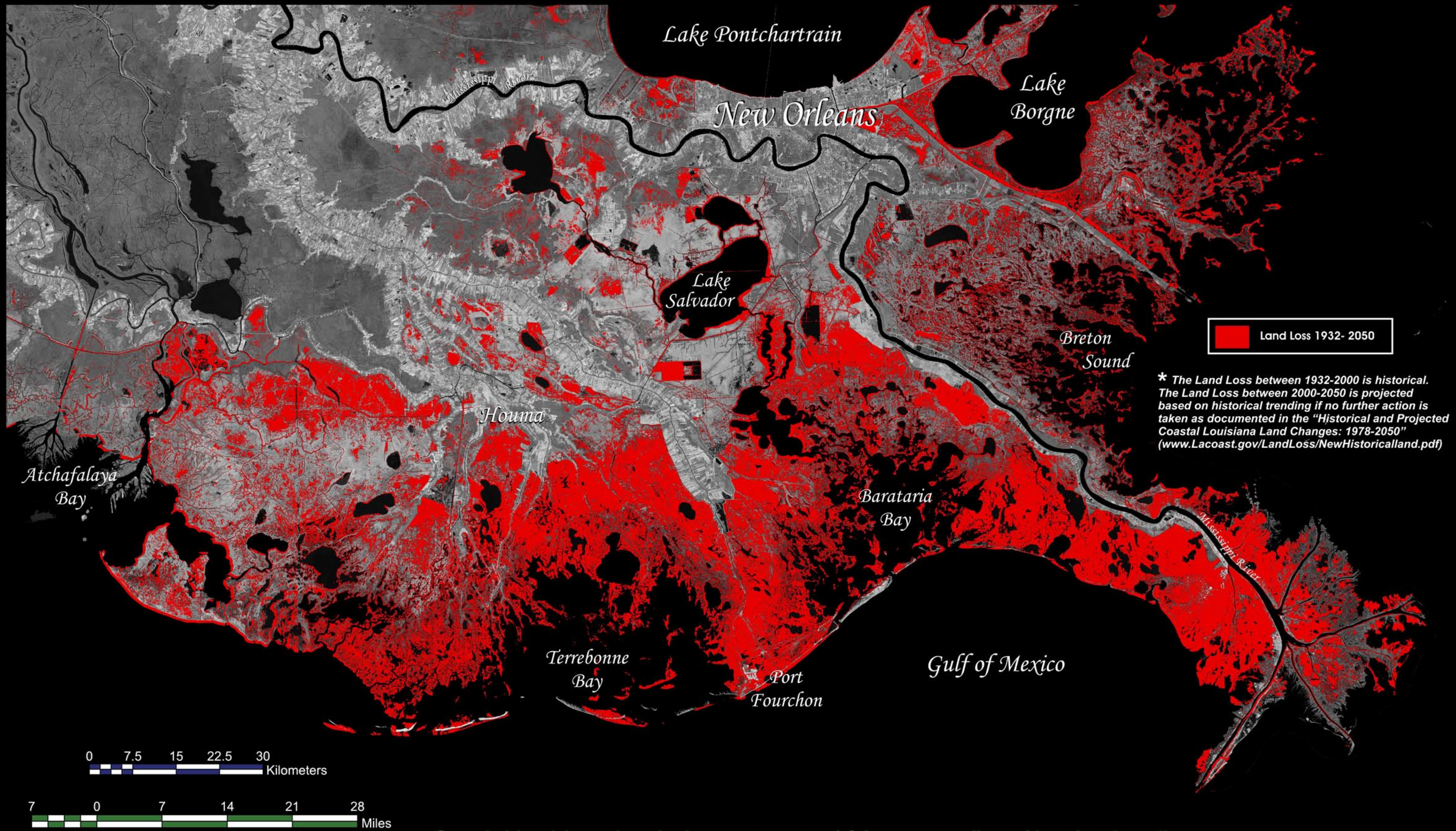


Southeast Louisiana Land Loss

** Historical and Projected Land Loss in the Deltaic Plain*



* The Land Loss between 1932-2000 is historical. The Land Loss between 2000-2050 is projected based on historical trending if no further action is taken as documented in the "Historical and Projected Coastal Louisiana Land Changes: 1978-2050" (www.LaCoast.gov/LandLoss/NewHistoricalLand.pdf)

Coastal Louisiana has lost an average of 34 square miles of land, primarily marsh, per year for the last 50 years. From 1932 to 2000, coastal Louisiana lost 1,900 square miles of land, roughly an area the size of the state of Delaware. If nothing more is done to stop this land loss, Louisiana could potentially lose approximately 700 additional square miles of land, or an area about equal to the size of the greater Washington D.C.- Baltimore area, in the next 50 years.



For more information about the land loss analysis or to see an animated time series of wetland change, visit www.LaCoast.gov/LandLoss

Data Sources:
 1932-1956 Land Change Analysis
 U.S. Army Corps of Engineers, New Orleans

 1956-1990 Land Change Analysis
 1978-2050 Land Change Analysis
 U.S. Department of the Interior
 U.S. Geological Survey
 National Wetlands Research Center
 Lafayette, LA

Prepared by:
 U.S. Department of the Interior
 U.S. Geological Survey
 National Wetlands Research Center
 Lafayette, LA

Map ID: USGS-NWRC 2005-16-0001
 Map Date: December 6, 2004

